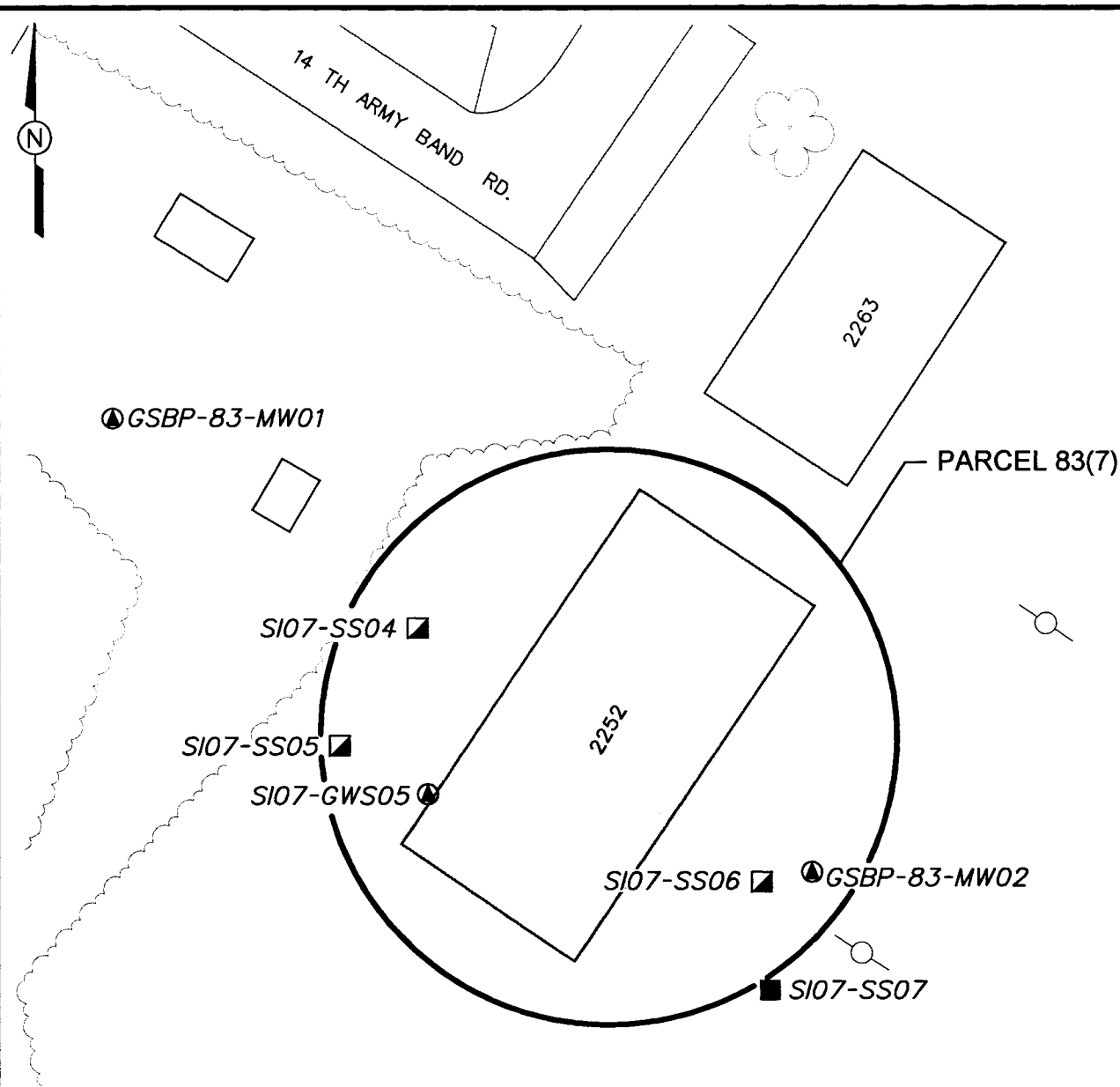


DWG. NO.: ... \774645es.518	INITIATOR: D. LAMB	DATE LAST REV.: 06/13/00	STARTING DATE: 06/13/00
PROJ. NO.: 774645	PROJ. MGR.: J. YACOUB	DRAFT, CHCK. BY: ENGR. CHCK. BY: D. LAMB	DRAWN BY: D. BILLINGSLEY

05/25/01
03:56:58 PM

DBILLING
c:\cadd\design\774645es.518



LEGEND

- UNIMPROVED ROADS AND PARKING
- PAVED ROADS AND PARKING
- BUILDING
- TREES / TREELINE
- PARCEL BOUNDARY
- UTILITY POLE
- GROUNDWATER SAMPLE LOCATION
- SURFACE SOIL SAMPLE LOCATION
- SURFACE AND SUBSURFACE SOIL SAMPLE LOCATION

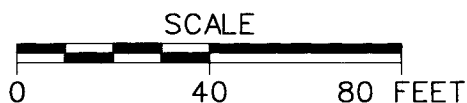


FIGURE 3-2
SAMPLE LOCATION MAP
GOLF COURSE PESTICIDE
MIX/STORAGE FACILITY
PARCEL 83(7)

U. S. ARMY CORPS OF ENGINEERS
MOBILE DISTRICT
FORT McCLELLAN
CALHOUN COUNTY, ALABAMA
Contract No. DACA21-96-D-0018